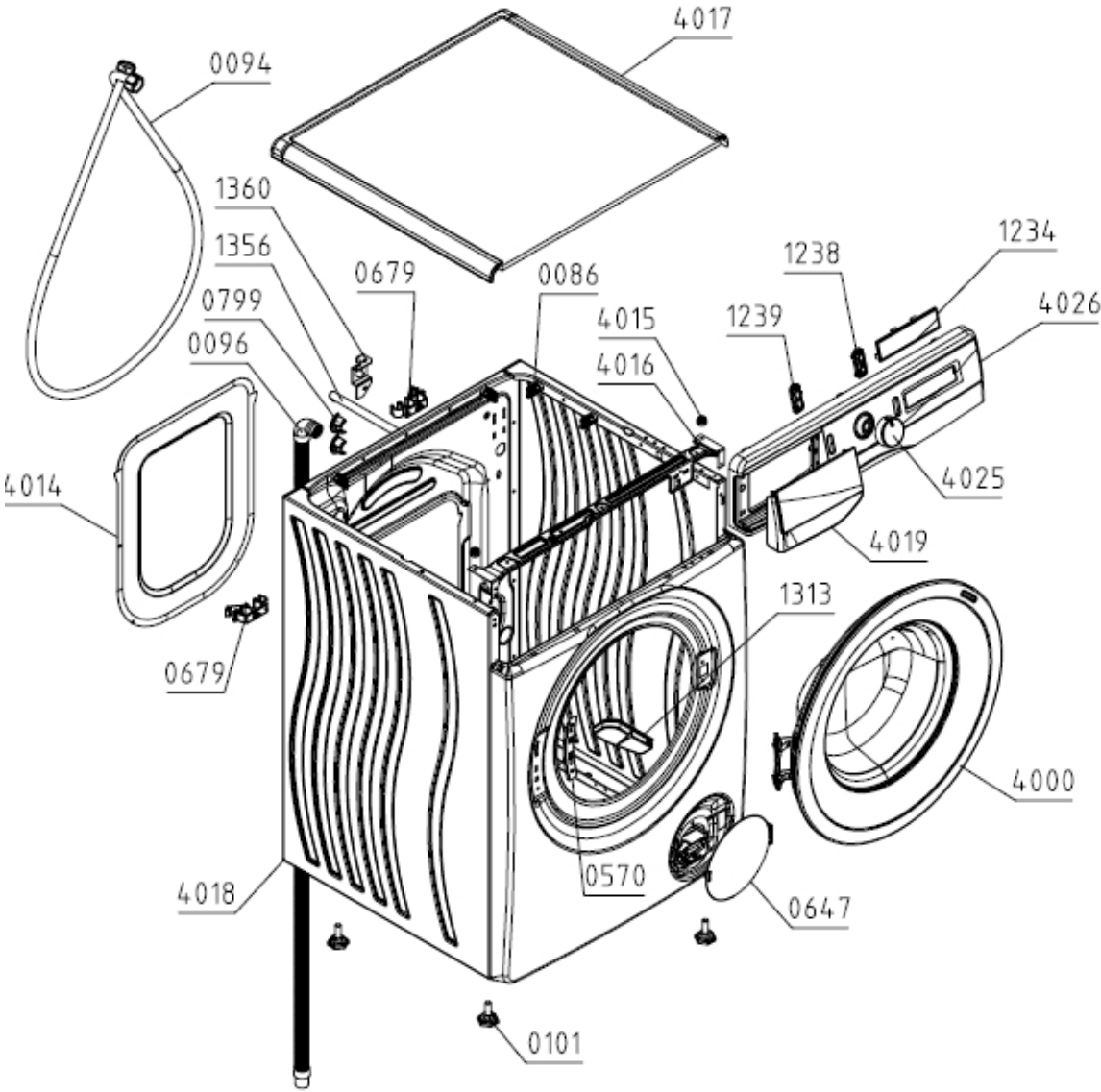


Type (Modèle Usine) PS22/18140
Modèle WFGP101439VM
ID Produit / ART. No 739730

Marque HISENSE
Version 24.03.2022
N° d'Index 01

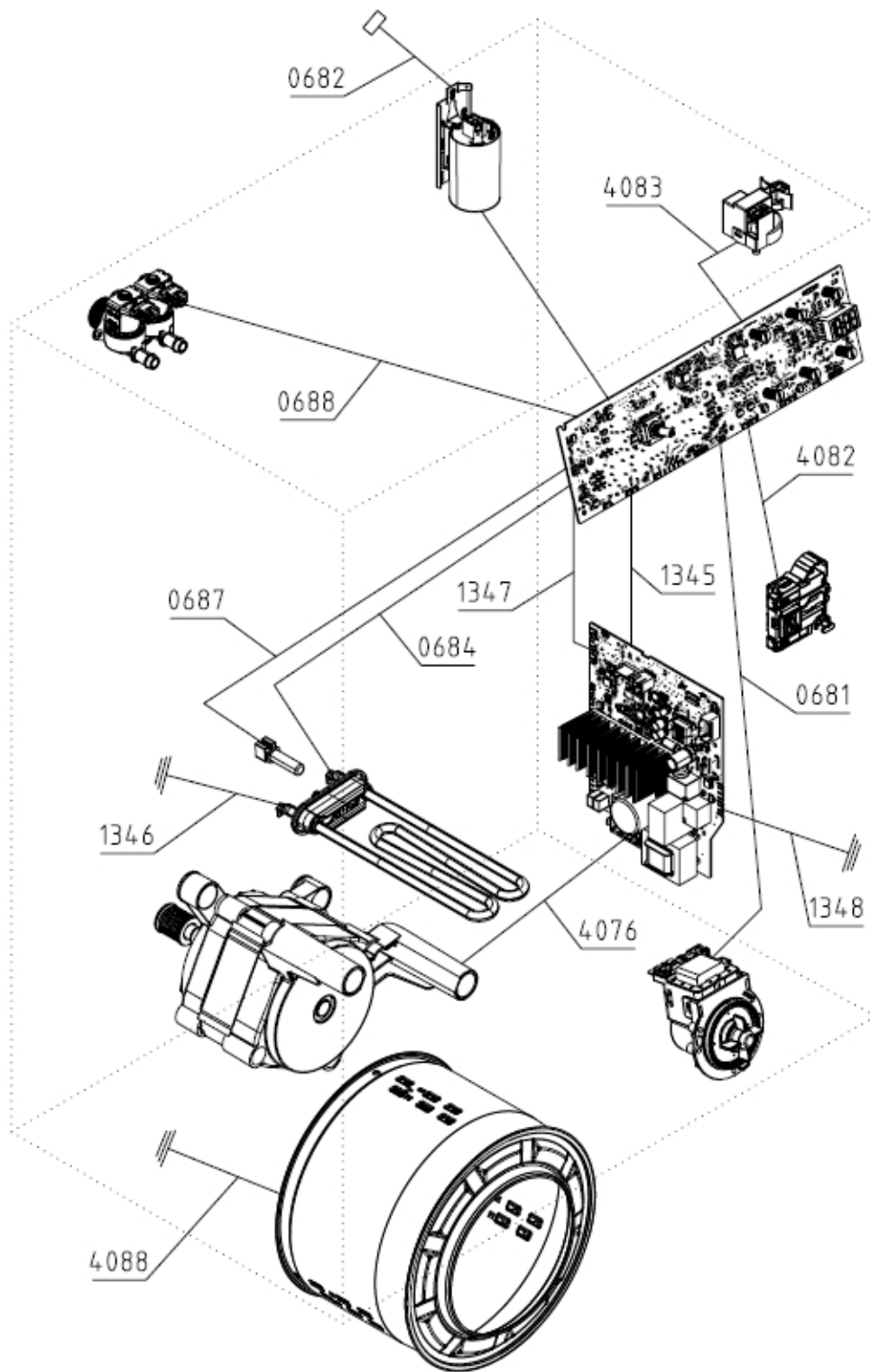
021447



Position	Identifiant	Désignation	Quantité	Validité	Référence Pièce
0086	547104	CLAMP PS	11		G547104
0094	157474	SUPPLY HOSE HV PS	1		G157474
0096	699606	DISCHARGE HOSE NK PS-15	1		G699606

Position	Identifiant	Désignation	Quantité	Validité	Référence Pièce
0101	816544	ADJUSTABLE FOOT PS-10 KPL	4		G816544
0570	466627	HINGE PLATE PS-15	1		G466627
0647	579303	FILTER COVER PS-15 KPL	1		G579303
0679	877538	HOSE HOLDER PS-22	2		G877538
0799	148999	RUBBER SEAL PS-03	1		G148999
1234	846693	DISPLAY PLATE B1 PS-22	1		G846693
1238	846677	PAUSE KEY PS/SP-22	1		G846677
1239	846676	SWITCH ON KEY PS/SP-22	1		G846676
1356	466625	BLOCKING ROD 600 PS-15	2		G466625
1360	587350	TRANSPORT RODS SUPORT	2		G587350
4000	863876	DOOR PS-15 KPL	1		G863876
4014	466535	REAR WALL COVER PS-15 F	1		G466535
4015	578966	WORKTOP PLUG PS-15 ASSY	2		G578966
4016	808503	CONTROL PANEL HOLDER PS-15 MOLLIS	1		G808503
4017	579100	WORKTOP 60 PS-15 KPL	1		G579100
4018	721559	CABINET 60/10-1600 PS-15 LA070-S	1		G721559
4019	865106	SOAP DISPENSER HANDLE PS-22 HSN SIG	1		G865106
4025	863442	CONTROL KNOB PS/SP-22 KPL	1		G863442
4026	865094	FRONT PANEL B1 PS-22 FR/NS HSN SIG	1		G865094

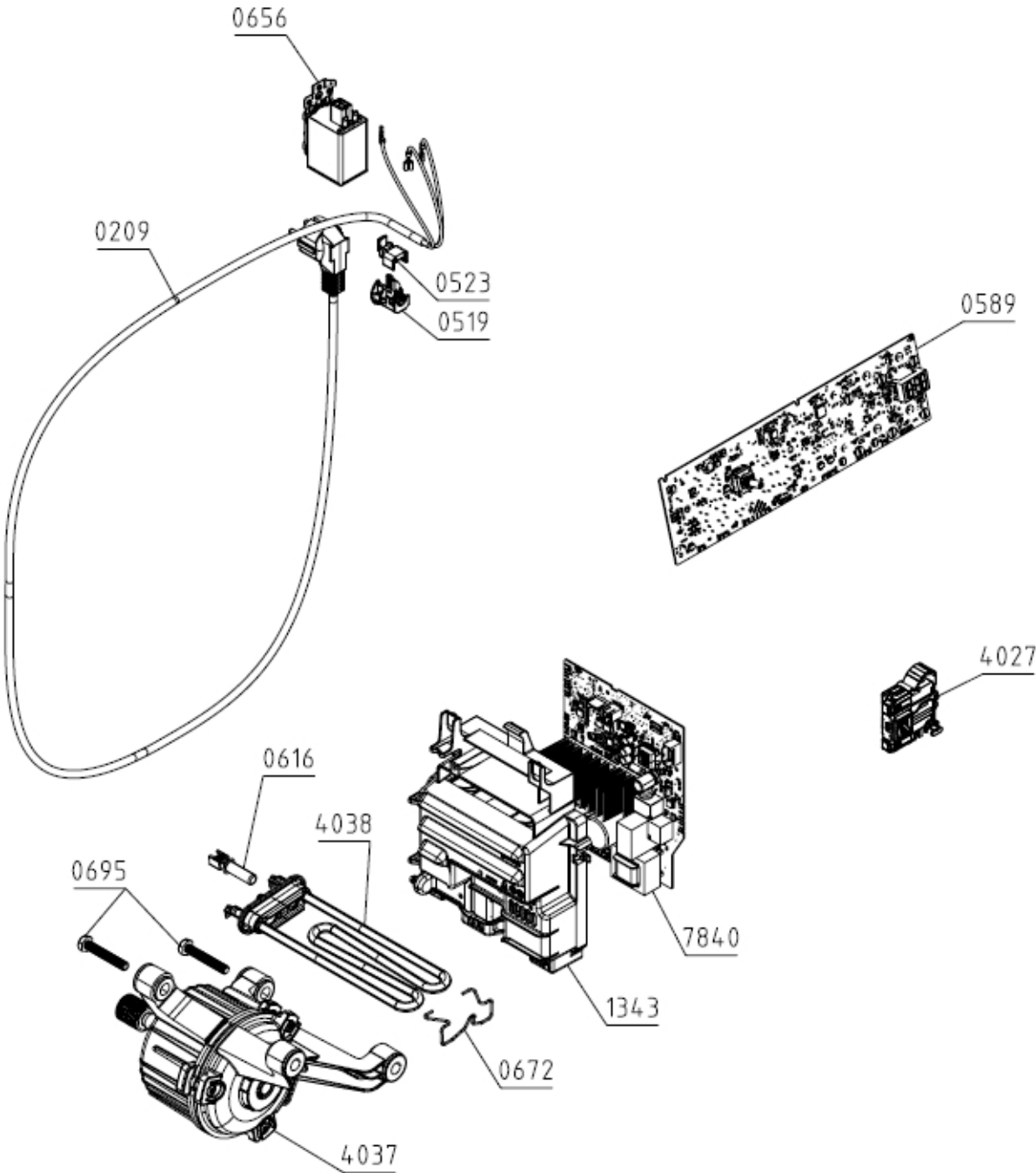
023457



Position	Identifiant	Désignation	Quantité	Validité	Référence Pièce
0681	870460	WIRING HARNESS PUMP 60/EN PS-22 N	1		G870460
0682	870423	WIRING HARNESS SUPPLY 60/EN PS-22 N	1		G870423
0684	870431	WIRING HARNESS HEATER 60/EN PS-22 N	1		G870431
0687	870456	WIRING HARNESS - NTC 60/EN PS-22 N	1		G870456
0688	870430	WIRING HARNESS VALVE 60/EN PS-22 N	1		G870430
1345	870436	WIRING HARNESS SUPPLY MCU 60/EN PS-22 N	1		G870436

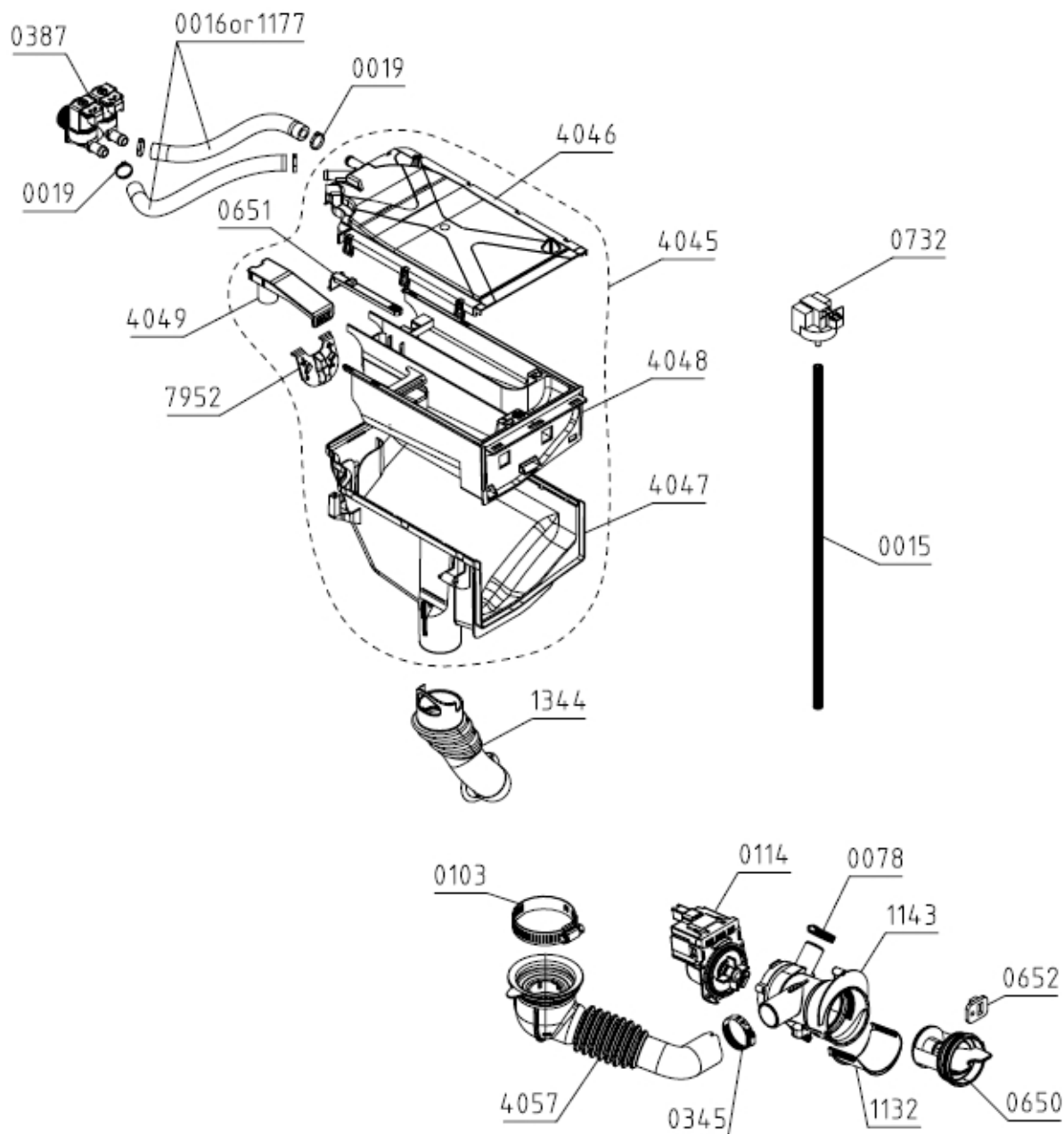
Position	Identifiant	Désignation	Quantité	Validité	Référence Pièce
1346	870419	WIRING HARNESS EARTHING HEATER PS-22 N	1		G870419
1347	870450	WIRING HARNESS COMMUN.MCU 60/EN PS-22 N	1		G870450
1348	870297	EARTHING MCU PS-22 N	1		G870297
4076	870296	WIRING HARNESS MOTOR EN PS-22 N	1		G870296
4082	870418	WIRING HARNESS DOOR SWITCH EN PS-22 N	1		G870418
4083	870417	WIRING HARNESS SENSOR LEVEL EN PS-22 N	1		G870417
4088	870168	GROUNDING DRUM BM PS-15 N	1		G870168

023458



Position	Identifiant	Désignation	Quantité	Validité	Référence Pièce
0209	132222	CABLE WITH PLUG H05VV-F3G1.0 1550	1		G132222
0519	667400	RUBBER SEAL	1		G667400
0523	667401	CLIP FOR INITIATION SLEEVE	1		G667401
0589	871536	CONTROL UNIT PS-22/60-A-14-10-NS-E-M	1		G871536
0616	658696	TEMPERATURE SENSOR	1		G658696
0656	431466	RFI-FILTER 1,5MH H.A.L.	1		G431466
0672	194555	HEATER CLAMP PS-03 CA	1		G194555
0695	587311	SCREW PT80X50 EJOT A2K	2		G587311
1343	846697	CONTROL UNIT HOLDER MCU PS-22	1		G846697
4027	579333	DOOR LOCK PS-15	1		G579333
4037	816211	ELECTROMOTOR BPM 54/60 KINGCLEAN	1		G816211
4038	602720	TUB.HEATER 230V/1700W	1		G602720
7840	843135	SUPPLY UNIT BM-9.33 PS-22 KING3	1		G843135

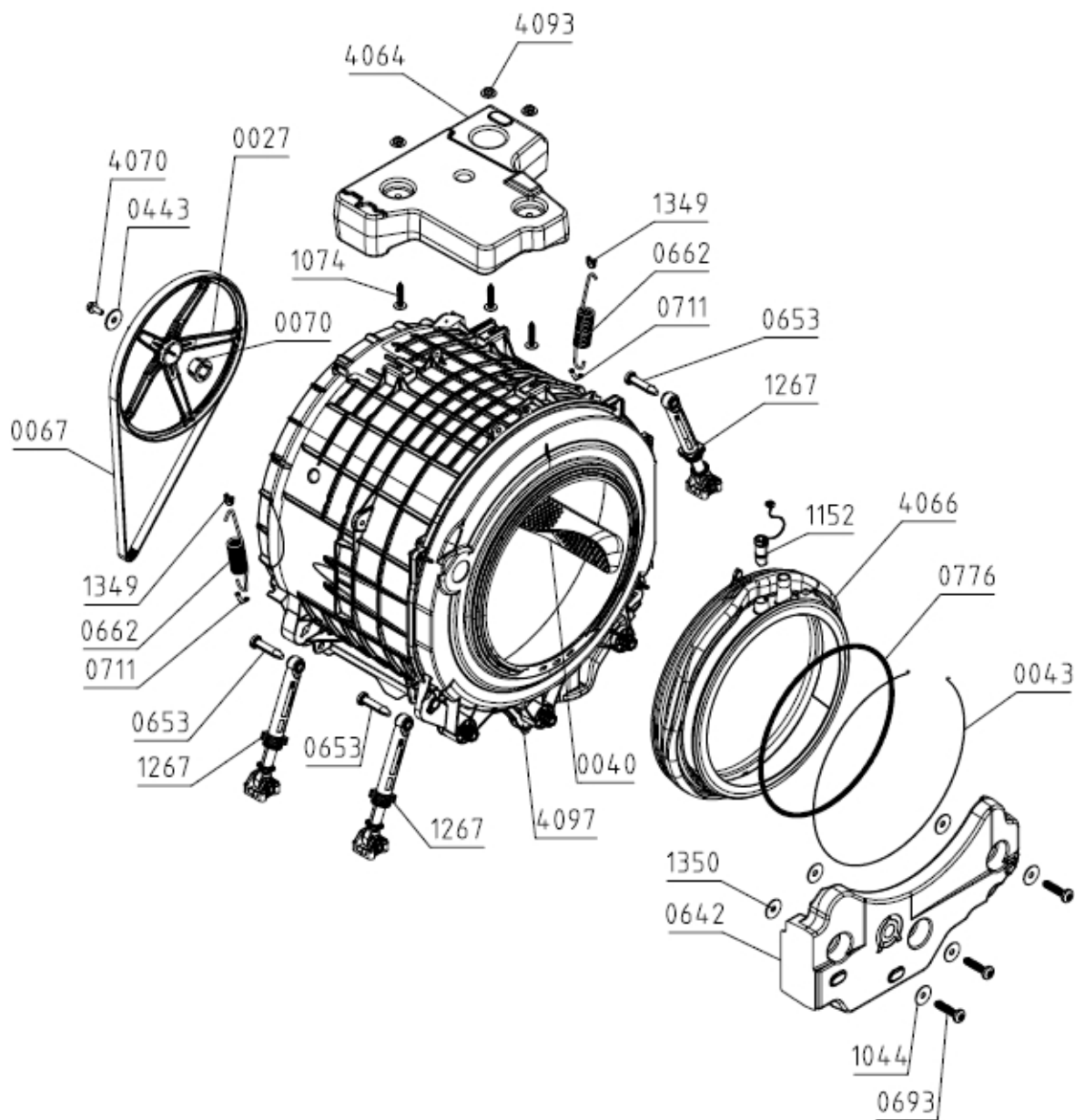
024424



Position	Identifiant	Désignation	Quantité	Validité	Référence Pièce
0015	468045	HYDROSTAT HOSE PS-03 L570	1		G468045
0019	314400	CLAMP - PLASTIC D 16	4		G314400
0078	349484	CLAMP - WIRE D 28	1		G349484
0103	548401	CLAMP - WIRE PS D 65	1		G548401
0114	629232	DISCHARGING PUMP ZS BPX2-245L LEILI	1		G629232
0345	537874	CLAMP - WIRE D 38	1		G537874
0387	789799	ELECTRO VALVE DOUBLE MT ELBI	1		G789799
0650	716300	FILTER INSERTION E PS-15	1		G716300
0651	579171	SNAP PIN PS-15	1		G579171
0652	587438	FILTER SHOCK ABSORBER	1		G587438
0732	797414	WATER LEVEL SENSOR ST-545 NS METALFLEX	1		G797414

Position	Identifiant	Désignation	Quantité	Validité	Référence Pièce
1132	333909	DISCHARGE CHANNEL PS-10	1		G333909
1143	333903	FILTER BOX PS-10	1		G333903
1177	309930	HOSE PS D15X260	2		G309930
1344	838776	DETERGENT HOSE PS-20	1		G838776
4045	865319	SOAP DISPENSER BOL PS-15 KPL	1		G865319
4046	466586	SOAP DISPENSER LID PS-15 ASSY.	1		G466586
4047	865317	SOAP DISPENSER HOUSING BOL PS-15	1		G865317
4048	579190	SOAP DISPENSER DRAWER PS-15	1		G579190
4049	672929	SOFTENER INSERT PS-15	1		G672929
4057	590300	HOSE TUB-FILTER PS-15 KPL	1		G590300
7952	466608	LIQUID DETERGENT INSERT PS-15	1		G466608

025409



Position	Identifiant	Désignation	Quantité	Validité	Référence Pièce
0027	339066	BELT PULLEY PS-10	1		G339066
0040	664610	DRUM RIB WITH SHOWER 60 PS-15	3		G664610
0043	853975	WIRE CLIP D350 KPL	1		G853975
0067	111622	BELT POLY-V 6EPJ 1260 OPTIBELT	1		G111622
0070	587405	PULLEY SLEEVE 1200 PS-03	1		G587405
0443	234660	WASHER 10,5X36X3	1		G234660
0642	686252	FRONT WEIGHT PS-15	1		G686252
0653	587313	TUB SHOCK ABSORBER PIN PS-03 000	3		G587313
0662	705600	TUB SPRING 60 PS-15	2		G705600
0693	587309	SCREW PT100X50-WN5452-50IP-EJOT-A2K-TORX	3		G587309
0711	587346	SUPPORT SPRING INSERT PS-03 040	2		G587346
0776	122062	SPRING CLAMP PS-03	1		G122062

Position	Identifiant	Désignation	Quantité	Validité	Référence Pièce
1044	819493	WASHER D34/D10,5	3		G819493
1074	290070	SCREW	3		G290070
1267	473322	TUB SHOCK ABSORBER ASSY 60/10 PS-15	3		G473322
1349	857749	SUPPORTING SPRING INSERT-CABINET PS-21	2		G857749
1350	820573	WASHER 45X28X1,5-A2F	3		G820573
4064	465723	WEIGHT - UPPER 1400 PS-15	1		G465723
4066	576360	DOOR SEAL PS-15	1		G576360
4070	621649	SCREW M10X20-10.9-BR	1		G621649
4093	548358	NUT KPL	3		G548358
4097	871986	TUB W DRUM CA 60/10-1600 UL PS-15/22-S	1		G871986