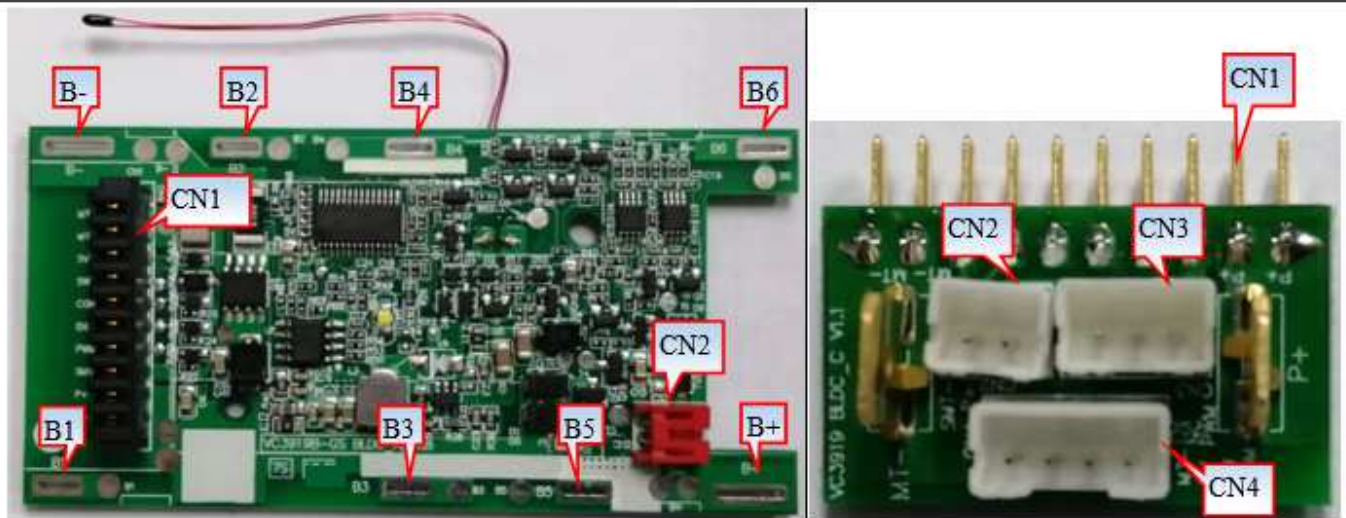


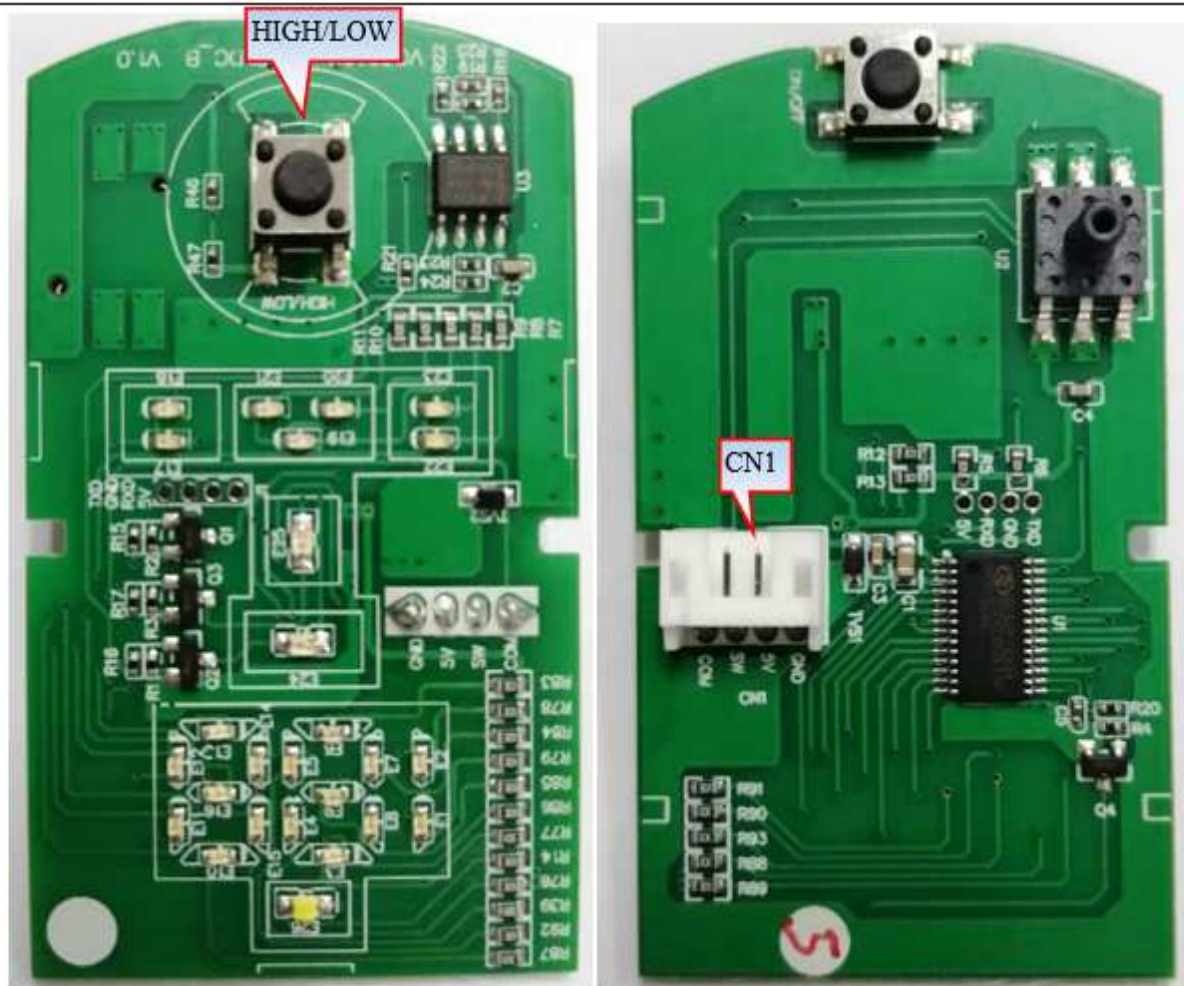
PCB Wiring diagram



	Details
Motherboard	
B-	Connect to Negative Side of Cell 1.
B1	Connect to Positive Side of Cell 1.
B2	Connect to Positive Side of Cell 2.
B3	Connect to Positive Side of Cell 3.
B4	Connect to Positive Side of Cell 4.
B5	Connect to Positive Side of Cell 5.
B6	Connect to Positive Side of Cell 6.
B+	Connect to Positive Side of Cell 7
CN2	Connect the charger
CN1	Connect the adapter board
Adapter board	
CN2	Connect the brush motor
CN1	<u>Connect the</u> main PCBA
CN4	<u>Connect to</u> the display board
CN3	BLDC' socket of control

Note: The power-on sequence requirements are as follows:

First go to B-, then connect to B1, B2, B3, B4, B5, B6, and finally to B+



4

Details	
Display board	
HIGH/LOW	Speed control button
ON/OFF	Power button
CN1	Connect the adapter board