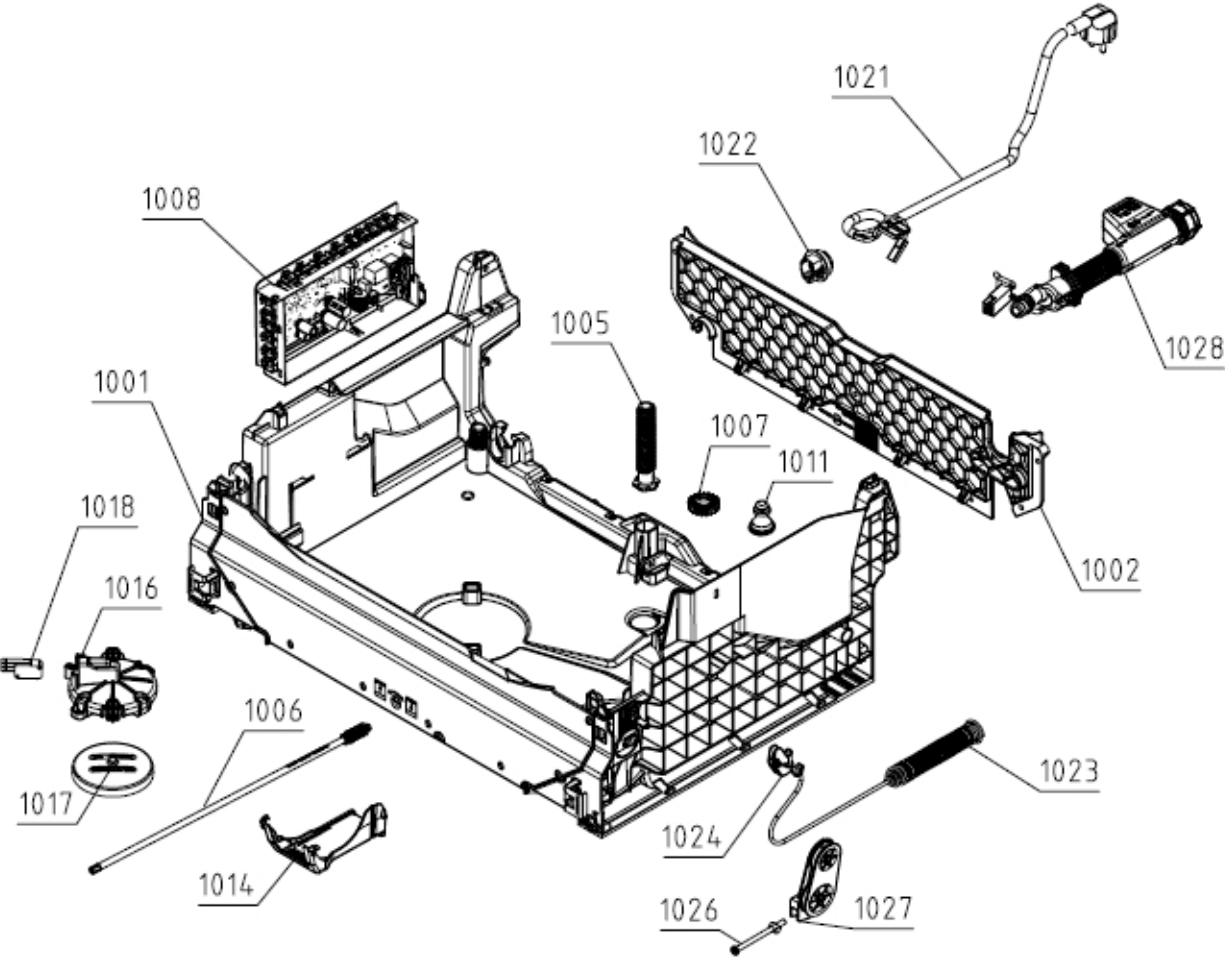


LISTE DES PIÈCES DÉTACHÉES

Type (Modèle Usine)	DW30.1	Marque	HISENSE
Modèle	HV651C60	Version	03.03.2022
ID Produit / ART. No	737732	N° d'Index	03

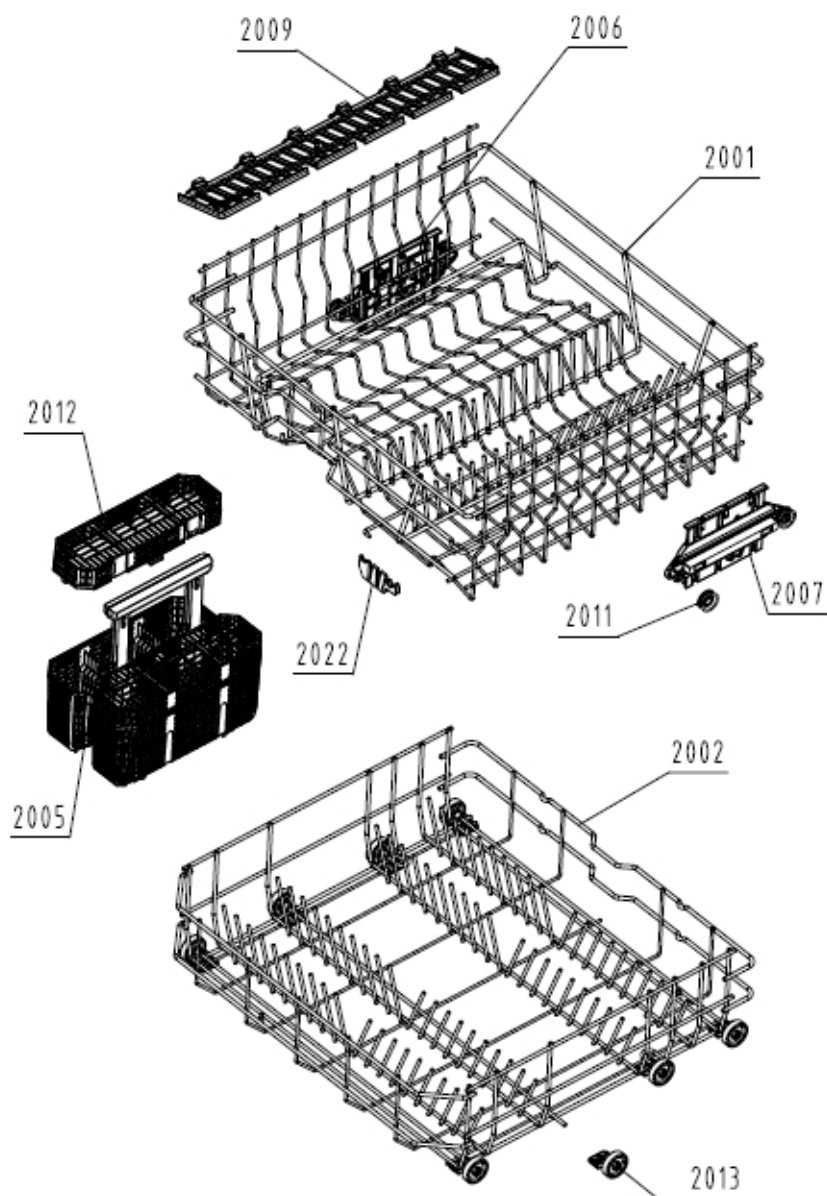
160644



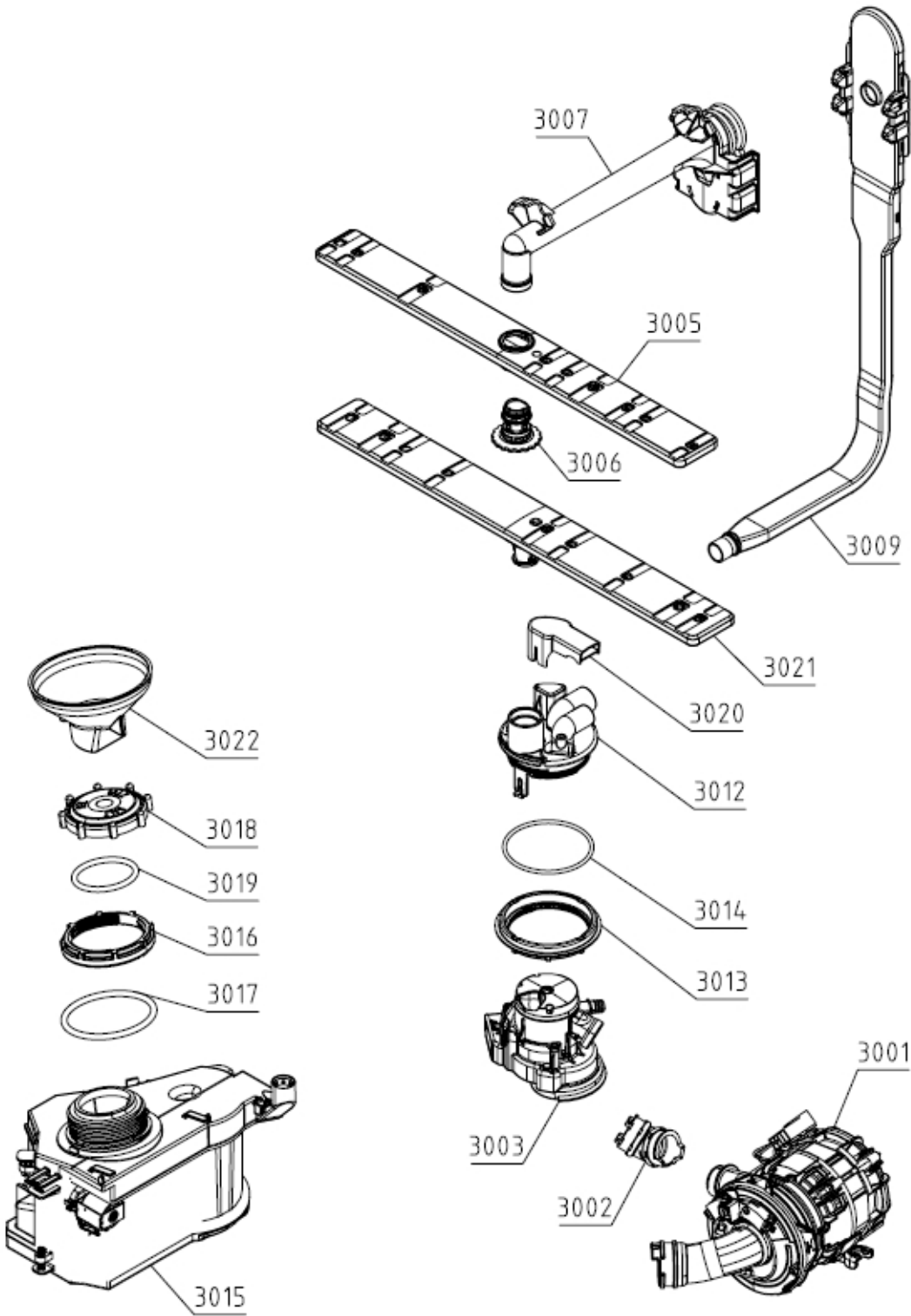
Position	Identifiant	Désignation	Quantité	Validité	Extra ID
1001	812032	BASE	1		
1001A	827396	SCREW BASE	2		
1002	512032	BASE COVER	1		
1002A	534737	SCREW PT K 0X10-A2K-WN5451-TORX20	8		
1005	512038	ADJUSTABLE FOOT	3		
1006	512031	WORM	1		

Position	Identifiant	Désignation	Quantité	Validité	Extra ID
1007	512082	GEAR	1		
1008	859453	CONTROL UNIT E	1		
1011	576727	CIRCULATION PUMP DAMPER	1		
1014	512040	CABLE PROTECTOR	1		
1016	512052	FLOAT BRACKET	1		
1017	512053	FLOAT	1		
1018	795705	FLOAT MICROSWITCH	1		
1021	708425	SUPPLY CORD	1		
1022	667400	RUBBER SEAL	1		
1022A	667401	CLIP FOR INITIATION SLEEVE	1		
1023	640309	KIT DOOR SPRING FI/BI	2		
1024	512237	DOOR HINGE BRAIDED LINE POP OUT	2		
1026	545950	SET SCREW/NUT FOR ADJ. DOOR SPRING	1		
1027	512081	SPRING STRETCHER GUIDE	2		
1028	699820	INLET HOSE 230V	1		

161666



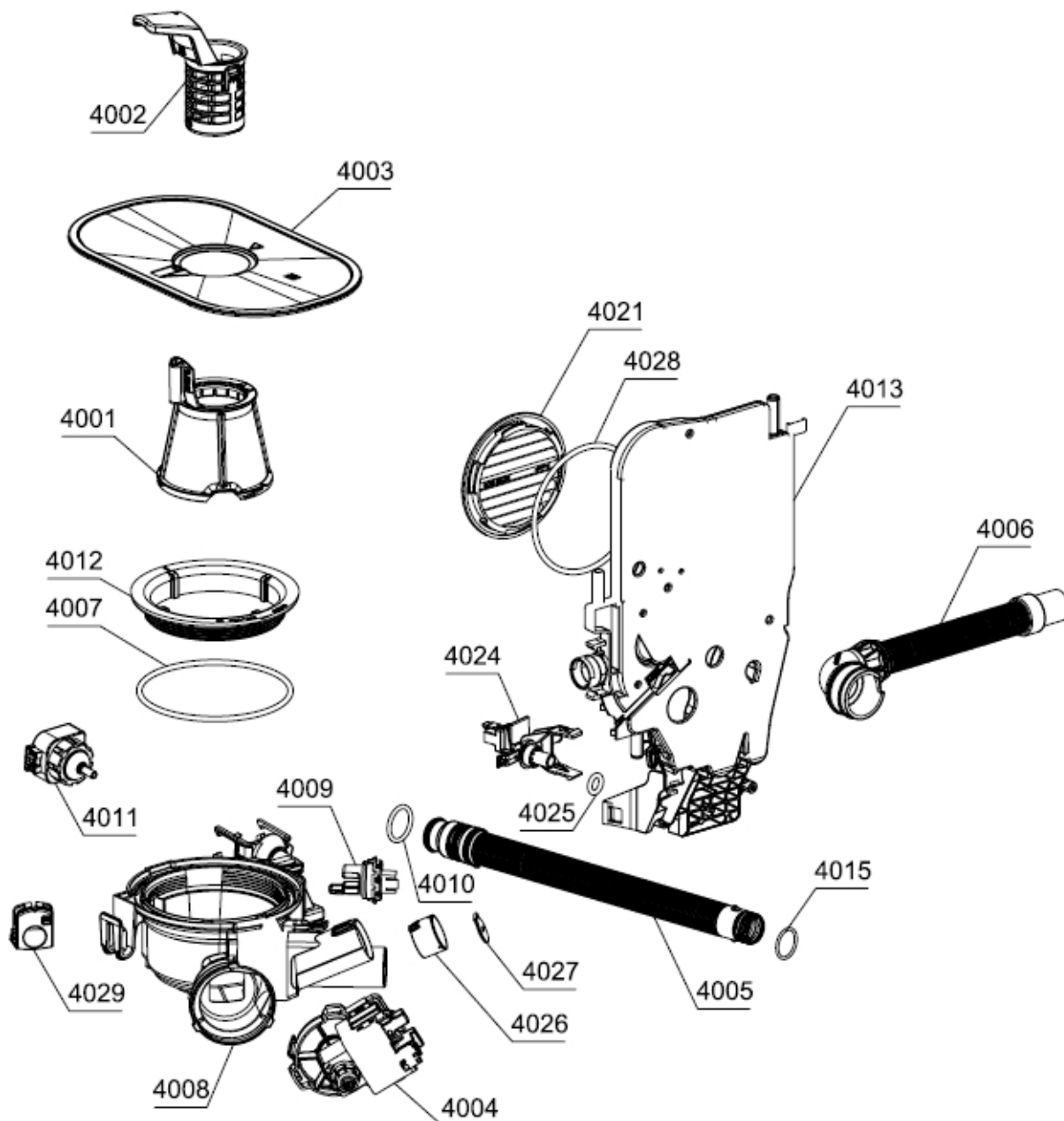
Position	Identifiant	Désignation	Quantité	Validité	Extra ID
2001	838145	UPPER BASKET ASSY	1		
2002	815654	BASKET LOWER ASSY	1		
2005	885710	CUTLERY BASKET	2		
2006	517325	BRACKET 3-LEVEL CLICK CLACK L ASSY	1		
2007	517326	BRACKET 3-LEVEL CLICK CLACK R ASSY	1		
2009	819529	CUP SHELF	1		
2011	588496	BASKET WHEEL UPP.7024	8		
2012	825007	CUTLERY BASKET LOW COVER	2		
2013	700391	LOWER BASKET WHEEL	8		
2022	662539	KNIFE RACK	1		



Position	Identifiant	Désignation	Quantité	Validité	Extra ID
3001	718007	CIRC.PUMP BLDC	1		
3001A	537874	CLAMP - WIRE D 38	1		
3002	879218	HOSE SET/CLAMP FOR CIRC.PUMP	1		
3003	820109	DIVERTER VALVE 3-POS	1		

Position	Identifiant	Désignation	Quantité	Validité	Extra ID
3005	515329	SPRAY ARM UPP ASSY	1		
3006	560801	UPP. BASKET SPRAY ARM BEARING DW 7024	1		
3007	829504	SPRAYER TUBE UPPER BASKET	1		
3009	513834	SPRAYER TUBE SINGLE SHORT DW30 XL	1		
3012	825546	SPRAY TOWER	1		
3013	700323	RING	1		
3014	700437	GASKET	1		
3015	514532	WATER SOFTENER UNIT 230V	1		
3016	514534	WATER SOFTENER UNIT LOCK RING	1		
3017	514535	O-RING 70X5	1		
3018	514536	WATER SOFTENER UNIT COVER	1		
3019	514537	O-RING 47X4,5	1		
3020	698061	DISCHARGE COVER	1		
3021	515308	SPRAY ARM LOW ASSY	1		
3022	561399	SALT FUNNEL DW30 5502-B	1		

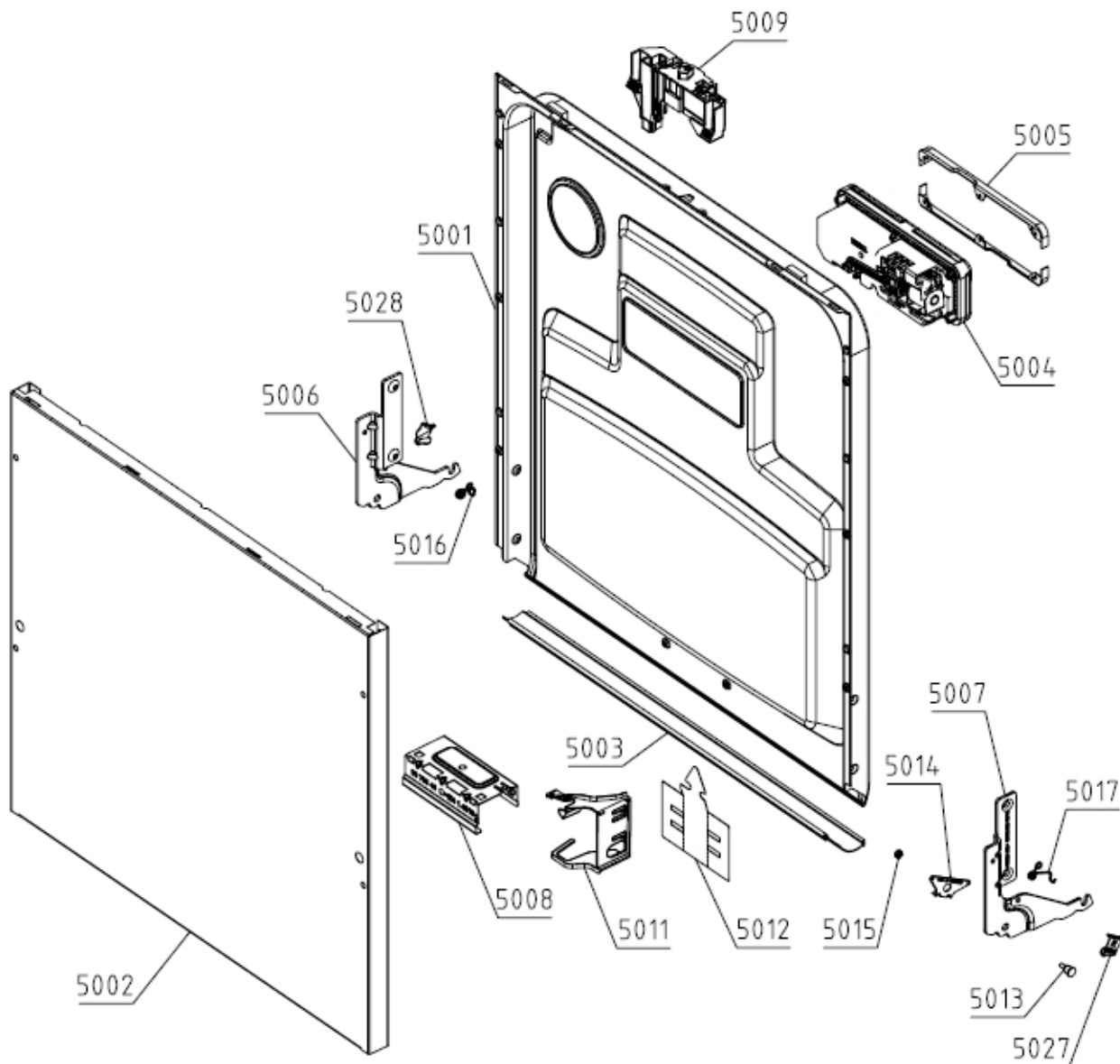
163631



Position	Identifiant	Désignation	Quantité	Validité	Extra ID
4001	838218	FILTER SET	1		
4002	819539	STRAINER	1		
4003	857521	STRAINER	1		
4004	581830	DRAIN PUMP	1		
4005	825235	DISCHARGE HOSE ASSY	1		
4006	545951	SET HOSE/CLAMP FOR SIPHON DISCHARGE	1		
4007	800466	O-RING	1		
4008	830852	SUMP	1		
4009	508116	TURBIDITY,THERMISTOR SENSOR UL4	1		
4010	512673	O-RING 23X3 N70	1		
4011	856275	PRESSURE SENSOR ASSY	1		

Position	Identifiant	Désignation	Quantité	Validité	Extra ID
4012	700325	RING	1		
4013	714341	SET AIR BREAK,O-RING	1		
4015	559007	O-RING 20,5X2	2		
4021	549272	AIR BREAK LOCK RING ANTI TILT ELBI-BI.	1		
4024	512672	AQUA STOP ADAPTER	1		
4025	517668	O-RING 10X3,5	1		
4026	513850	NON-RETURN VALVE HOLDER	1		
4027	513851	NON-RETURN VALVE	1		
4028	800507	O-RING	1		
4029	512051	BOTTOM SUMP PLUG 1070-Y	1		

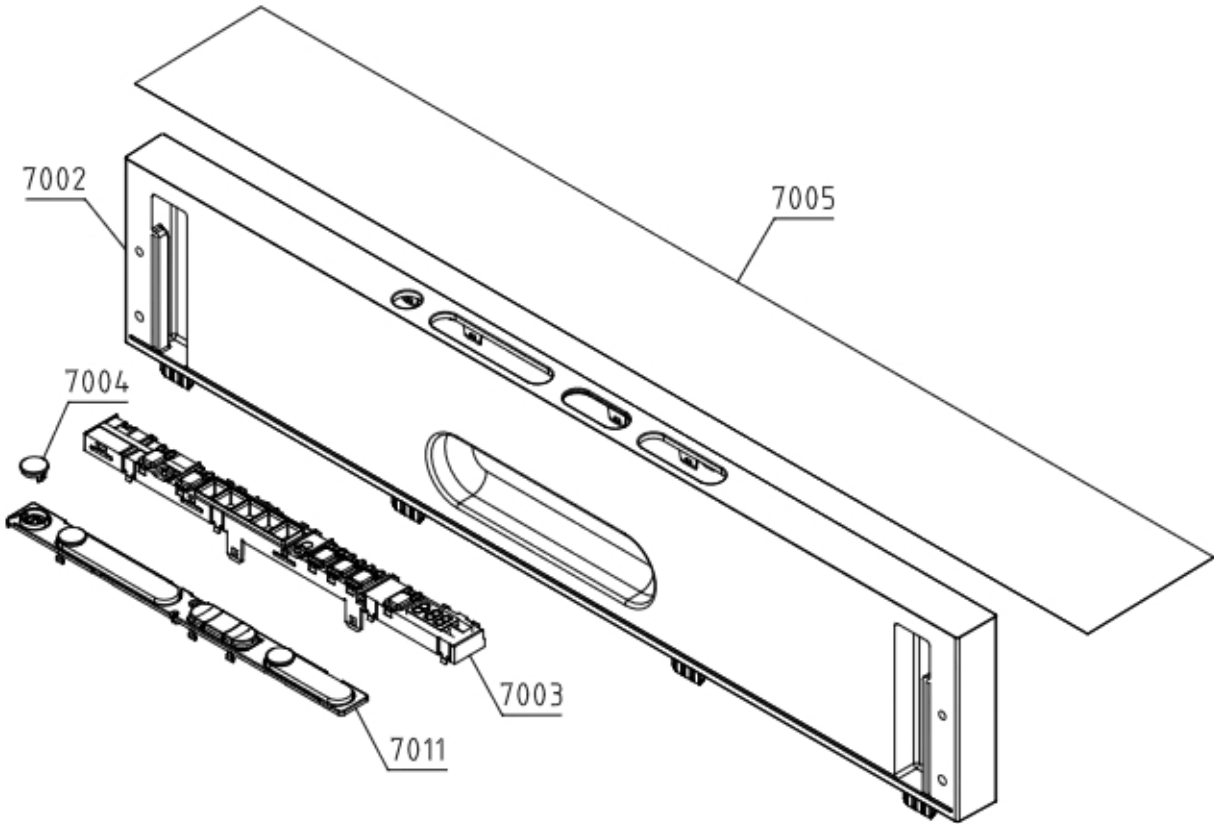
164641



Position	Identifiant	Désignation	Quantité	Validité	Extra ID
5001	822461	INNER DOOR XL	1		
5001A	785608	SCREW	4		
5001B	200617	SCREW PT KB40X10 WN1442 RFS	2		
5002	823794	DOOR OUTER FI/BI	1		
5003	426743	DOOR GASKET	1		
5004	700203	SOAP DISPENSER	1		
5005	700559	SOAP DISPENSER HOLDER DW COMBI AWECO	2		
5005A	200621	SCREW PTK 40X14 WN1452 FZB T2	8		
5006	877912	HINGE RIGHT	1		
5007	877911	HINGE LEFT	1		
5007A	872525	SCREW TEČAJA	3		
5009	556209	DOOR LOCK POP-OUT F.E-CONTROL ASSY	1		
5009A	570424	SCREW PTK 40X13 WN5454	4		

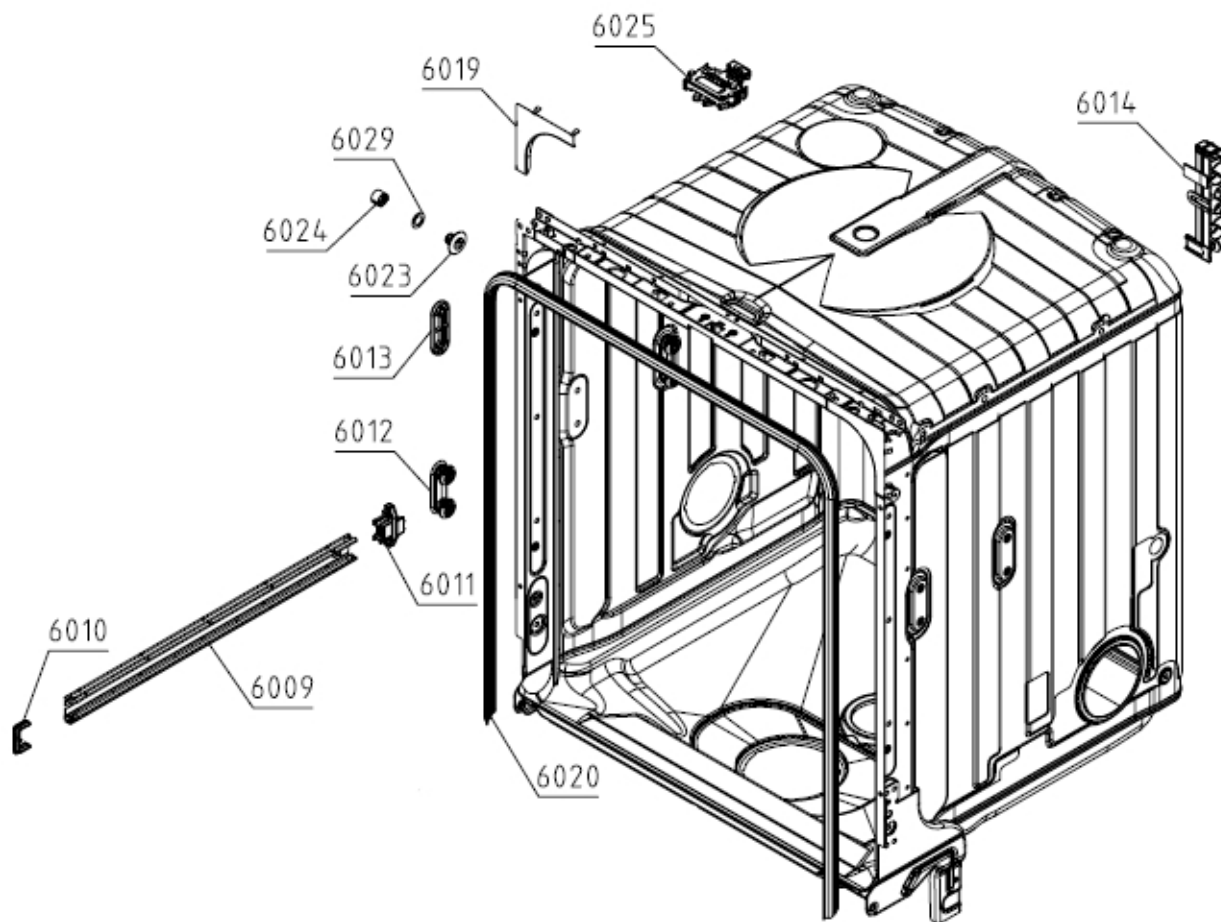
Position	Identifiant	Désignation	Quantité	Validité	Extra ID
5011	449948	INTERIOR DOOR HARNESS HOLDER DW UL4 9005	1		
5012	700409	COVER	1		
5013	700312	HINGE SCREW	2		
5014	700429	WASHER	2		
5015	587141	NUT M4 FLANGE SELF-LOCKING	2		
5016	663388	SPRING DOOR POP OUT DW30 L	1		
5016A	353700	SCREW SF 4X11-A3K-TORX20 EJOT	2		
5017	663389	SPRING DOOR POP OUT DW30 R	1		
5027	580180	SLIDE BEARING SPRING DOOR POP OUT R	1		
5028	580181	SLIDE BEARING SPRING DOOR POP OUT L	1		

165647



Position	Identifiant	Désignation	Quantité	Validité	Extra ID
7002	825412	CONTROL PANEL	1		
7003	804922	USER INTERFACE DW30.1	1		
7004	846757	KNOBS SET	1		
7005	831108	PROTECTIVE FOIL	1		
7011	823415	LENS	1		

166090



Position	Identifiant	Désignation	Quantité	Validité	Extra ID
6009	797102	GUIDE	2		
6010	700430	RAIL BLOCK	2		
6011	512228	GUIDE RAIL STOP REAR	2		
6012	884679	BASKET HOLDER WITH WHEELS ASSY	4		
6013	512194	BASKET HOLDER FIXING PLATE	4		
6013A	512226	SCREW PTK 40X22 WN1452 FZB T20	8		
6019	512148	DECORATIVE ANGULAR PIECE BLANK	2		
6020	853708	TUB GASKET UL	1		
6023	871824	GUIDE PLUG	2		
6024	640272	INSTALLATION PLUG	2		
6025	805101	DOOR LATCH	1		
6029	545891	WASHER 12X19X0,8 REINFORCEMENT	2		
9999	879264	ATTACHMENT BG ASSY	1		

SET KABELSKI
WIRING HARNESS
KABELBAUM
CABLAGE ASSEMBLE

Position	Identifiant	Désignation	Quantité	Validité	Extra ID
8005	867995	WIRING HARNESS HEATER	1		
8006	867988	WIRING HARNESS GCUX7-SALT SENSOR	1		
8007	867991	WIRING HARNESS GCUX11-SALT VALVE	1		
8008	867989	WIRING HARN.GCUX8-FLOW,PRES.,TURB.NTC	1		
8009	867996	WIRING HARNESS GCUX10-INLET DRAIN FLOAT	1		
8010	867992	WIRING HARNESS GCUX12-DIVERTER	1		
8011	868005	WIRING HARNESS GCUX17-BLDC PUMP	1		
8017	868020	WIRING HARNESS-INNER DOOR ASSY	1		
8018	867987	WIRING HARNESS GCUX3-SYSTEM POP-OUT	1		